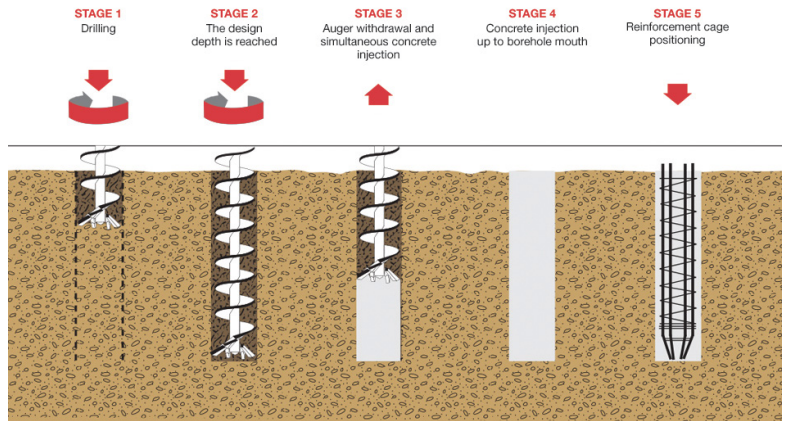


# PILING TECHNIQUES

## CFA PILING

**CFA (Continuous Flight Auger) piles are quick to install and they offer an efficient solution for more lightly-loaded structures.**

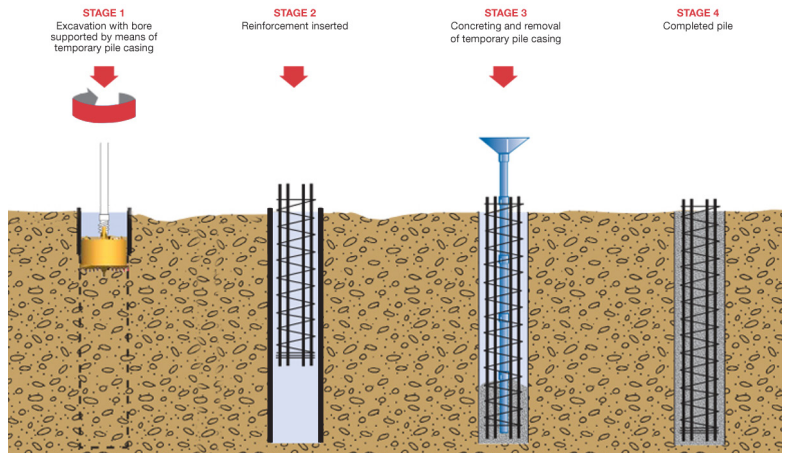
- High production rates mean that piles are commercially attractive
- Broad range of auger sizes (Common 300, 450, 600, 750, 900 diameter) means that the most economical use of construction materials is possible
- Depths of up to 25m means that CFA piling is effective for low to mid-range loading thus suitable for most commercial and residential projects
- Low noise emissions
- Virtually vibration free



## ROTARY BORE PILING

**Rotary Bore Piling is carried out by our Large Diameter Piling (LDP) rigs which offer higher power (torque) than our CFA rigs so they are more agile and able to overcome underground obstructions.**

- Amenable to almost all ground conditions including rock drilling
- Depths achievable up to 60m with casing and tool diameters up to 1.8m means that very high capacity loads can be achieved
- Minimal ground disturbance and vibration – resulting risk to adjacent structures and property is limited
- Simple and efficient installation process
- Ability to construct sockets into underlying rock
- Common diameters 600, 750, 900, 1050, 1200
- Can extend to greater depths when compared with any other piling techniques



## DISPLACEMENT PILING

**Rotary displacement piling systems provide improved soil strength, pile capacity and load transfer to the surrounding ground. This approach also offers a reduction in overall foundation costs by reducing pile lengths and diameters, as well as substantially reducing or eliminating the cost of pile spoil disposal.**

- Ideal for brownfield sites where contamination may be an issue
- Improved soil strength, pile capacity and load transfer to surrounding ground
- Minimal spoil

